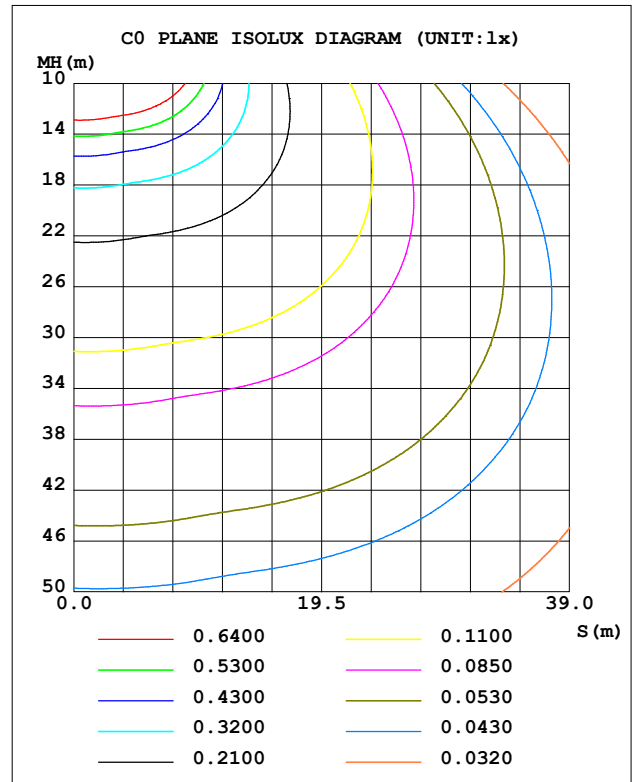
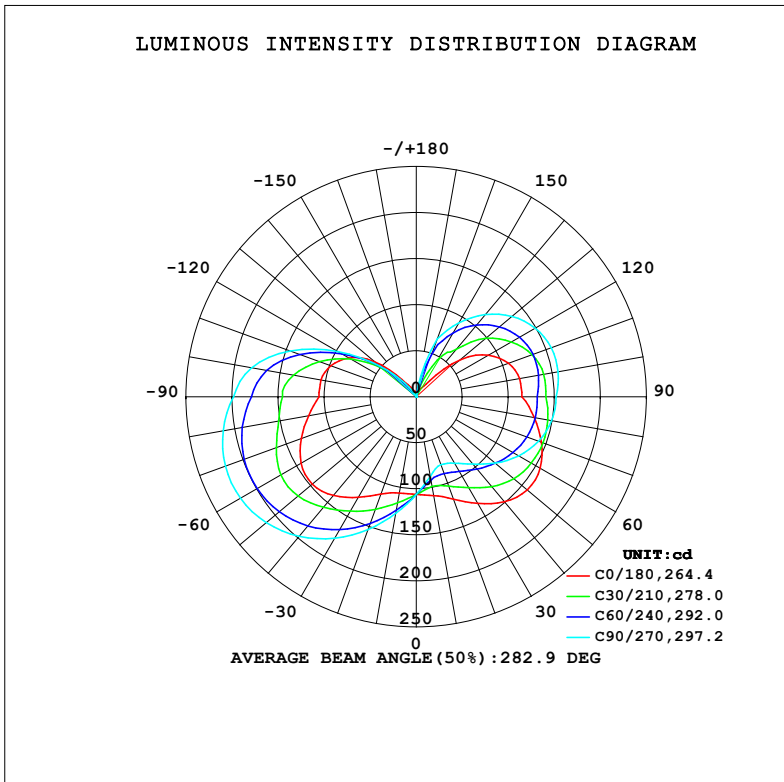


LUMINAIRE PHOTOMETRIC TEST REPORT

NAME: 95MALIA24LED/WH	TYPE:	WEIGHT: 1
SPEC.:	DIM.: 270 x 120 x 110	SERIAL No.: 0
MFR.: Elmark Industries JSC	SUR.: 4 circler	Shielding Angle:

DATA OF LAMP		PHOTOMETRIC DATA			
MODEL	95MALIA24LED/WH	Imax (cd)	221.8	S/MH (C0/180)	1.95
NOMINAL POWER (W)	24	LOR (%)	115.7	S/MH (C90/270)	2.48
RATED VOLTAGE (V)	230	TOTAL FLUX (lm)	1527.1	$\eta$ UP, DN (C0-180)	25.0, 29.7
NOMINAL FLUX (lm)	1320	CIE CLASS	SEMI-D.	$\eta$ UP, DN (C180-360)	19.8, 41.2
LAMPS INSIDE	1	$\eta$ up (%)	44.8	CIBSE SHR NOM	2.00
TEST VOLTAGE (V)	230	$\eta$ down (%)	70.8	CIBSE SHR MAX	2.00



C Range: 0 - 360DEG  
C Interval: 10.0DEG  
Test Speed: HIGH  
Temperature: 25.3°C  
Operators:  
Test Date: 03 January 2023

$\gamma$  Range: 0 - 170DEG  
 $\gamma$  Interval: 2.5DEG  
Test System: EVERFINE GO-2000A\_V1 SYSTEM V2.00.456  
Humidity: 65.0%  
Test Distance: 6.340m [K=1.0000]  
Remarks:

### ZONAL FLUX DIAGRAM

#### ZONAL FLUX DIAGRAM:

$\gamma$	C0	C45	C90	C135	C180	C225	C270	C315	$\gamma$	$\Phi$ zone	$\Phi$ total	%lum,lamp
10	109.3	94.73	88.03	92.74	106.4	121.4	128.6	123.4	0- 10	10.22	10.22	0.67,0.77
20	118.5	95.77	78.66	90.96	112.7	139.0	153.4	142.9	10- 20	31.78	42.01	2.75,3.18
30	133.8	103.5	83.40	97.08	126.1	155.9	177.3	161.4	20- 30	57.03	99.04	6.49,7.5
40	148.8	114.8	95.59	107.6	140.0	169.4	197.8	176.3	30- 40	85.96	185.0	12.1,14
50	157.4	125.6	112.2	118.2	147.5	178.5	212.6	186.6	40- 50	115.9	300.9	19.7,22.8
60	155.4	133.3	128.5	126.0	144.4	183.6	220.4	191.6	50- 60	141.7	442.6	29,33.5
70	144.7	137.0	141.3	130.2	132.9	184.0	220.6	191.8	60- 70	159.3	601.9	39.4,45.6
80	130.1	136.8	149.4	131.2	118.8	178.1	212.8	185.7	70- 80	167.1	769.1	50.4,58.3
90	114.9	132.8	151.9	128.8	105.9	166.3	198.5	173.0	80- 90	166.1	935.1	61.2,70.8
100	114.0	133.0	156.4	130.3	105.1	154.1	181.8	159.9	90-100	159.9	1095	71.7,83
110	106.6	128.9	156.1	126.9	98.82	125.2	145.7	129.1	100-110	144.6	1240	81.2,93.9
120	90.35	119.0	149.3	117.6	84.49	87.90	98.18	89.67	110-120	116.6	1356	88.8,103
130	63.07	104.6	135.8	103.7	59.89	50.07	52.85	49.76	120-130	82.69	1439	94.2,109
140	23.46	87.54	116.6	87.31	24.64	12.66	19.39	10.94	130-140	48.84	1488	97.4,113
150	10.58	65.92	92.65	68.42	11.65	2.585	2.781	2.117	140-150	24.50	1512	99,115
160	4.686	28.14	66.54	30.69	5.318	3.218	1.161	2.067	150-160	11.71	1524	99.8,115
170	3.545	2.658	12.32	2.640	4.271	1.269	1.227	1.276	160-170	3.036	1527	100,116
180	0	0	0	0	0	0	0	0	170-180	0.0770	1527	100,116
DEG	LUMINOUS INTENSITY:cd									UNIT:lm		

Conical surface Flux(90deg): 239.33 lm

%lum = 15.7%

%lamp = 18.1%

Conical surface Flux(130deg): 520.69 lm

%lum = 34.1%

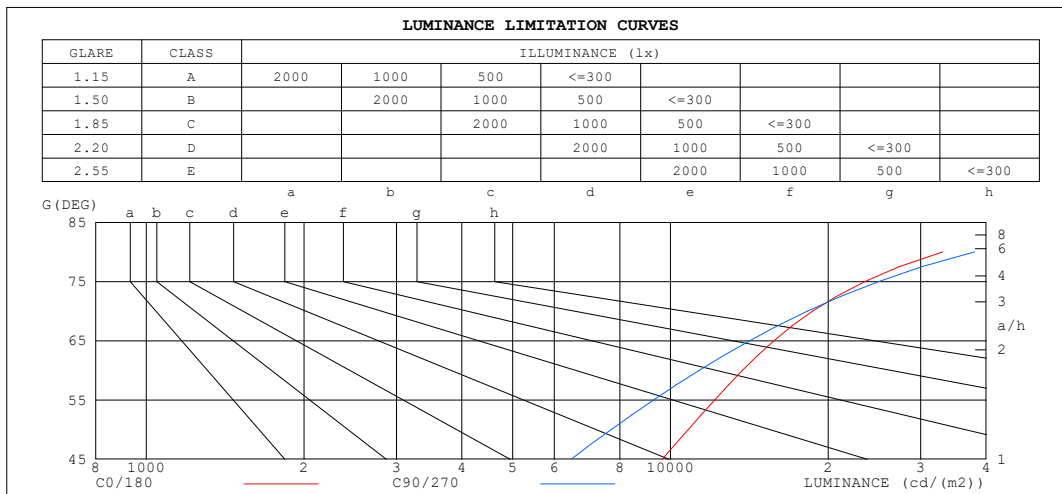
%lamp = 39.4%

C Range: 0 - 360DEG  
C Interval: 10.0DEG  
Test Speed: HIGH  
Temperature:25.3°C  
Operators:  
Test Date:03 January 2023

$\gamma$  Range: 0 - 170DEG  
 $\gamma$  Interval: 2.5DEG  
Test System:EVERFINE GO-2000A\_V1 SYSTEM V2.00.456  
Humidity:65.0%  
Test Distance:6.340m [K=1.0000]  
Remarks:

LUMINANCE LIMITATION CURVES

NAME: 95MALIA24LED/WH	TYPE:	WEIGHT: 1
SPEC.:	DIM.: 270 x 120 x 110	SERIAL No.: 0
MFR.: Elmark Industries JSC	SUR.: 4 circler	Shielding Angle:



LUMINANCE cd/(m2)		
G (DEG)	C0/180	C90/270
85	62116	76673
80	33069	37989
75	23464	24910
70	18666	18246
65	15749	14152
60	13717	11346
55	12139	9284
50	10807	7705
45	9632	6465

C Range: 0 - 360DEG  
 C Interval: 10.0DEG  
 Test Speed: HIGH  
 Temperature: 25.3°C  
 Operators:  
 Test Date: 03 January 2023

γ Range: 0 - 170DEG  
 γ Interval: 2.5DEG  
 Test System: EVERFINE GO-2000A\_V1 SYSTEM V2.00.456  
 Humidity: 65.0%  
 Test Distance: 6.340m [K=1.0000]  
 Remarks:

```

γ Range: 0 - 170DEG
γ Interval: 2.5DEG
Test System:EVERFINE GO-2000A_V1 SYSTEM V2.00.456
Humidity:65.0%
Test Distance:6.340m [K=1.0000]
Remarks:

```

## WEC AND CCEC

NAME: 95MALIA24LED/WH	TYPE:	WEIGHT: 1
SPEC.:	DIM.: 270 x 120 x 110	SERIAL No.: 0
MFR.: Elmark Industries JSC	SUR.: 4 circler	Shielding Angle:

pcc	80%			70%			50%			30%			10%			0
pw	50%	30%	10%	50%	30%	10%	50%	30%	10%	50%	30%	10%	50%	30%	10%	0
pfc	20%			20%			20%			20%			20%			0
RCR	RCR:Room Cavity Ratio						Wall Exitance Coefficients(WEC)									
0.0																
1.0	.503	.286	.091	.481	.274	.087	.440	.252	.081	.402	.232	.074	.366	.212	.068	
2.0	.418	.229	.070	.398	.219	.067	.360	.200	.062	.325	.182	.057	.293	.166	.052	
3.0	.363	.193	.058	.344	.184	.056	.310	.168	.051	.278	.152	.047	.248	.137	.043	
4.0	.322	.167	.049	.305	.160	.047	.273	.145	.043	.244	.131	.040	.217	.118	.036	
5.0	.289	.147	.043	.274	.141	.041	.245	.128	.038	.218	.115	.034	.193	.103	.031	
6.0	.263	.132	.038	.249	.126	.036	.222	.114	.033	.197	.102	.030	.174	.092	.027	
7.0	.241	.119	.034	.228	.114	.032	.203	.103	.030	.180	.092	.027	.159	.082	.024	
8.0	.222	.109	.031	.210	.104	.029	.188	.094	.027	.166	.084	.024	.146	.075	.022	
9.0	.206	.100	.028	.195	.095	.027	.174	.086	.024	.154	.077	.022	.135	.069	.020	
10.0	.192	.092	.026	.182	.088	.025	.162	.080	.022	.144	.071	.020	.126	.063	.018	

pcc	80%			70%			50%			30%			10%			0
pw	50%	30%	10%	50%	30%	10%	50%	30%	10%	50%	30%	10%	50%	30%	10%	0
pfc	20%			20%			20%			20%			20%			0
RCR	RCR:Room Cavity Ratio						Ceiling Cavity Exitance Coefficients (CCEC)									
0.0	.562	.562	.562	.480	.480	.480	.328	.328	.328	.188	.188	.188	.060	.060	.060	
1.0	.563	.524	.489	.482	.450	.420	.330	.309	.291	.190	.179	.169	.061	.058	.055	
2.0	.557	.499	.451	.477	.430	.389	.327	.297	.272	.188	.173	.159	.060	.056	.052	
3.0	.549	.481	.428	.470	.415	.371	.323	.288	.260	.187	.168	.153	.060	.055	.050	
4.0	.540	.468	.413	.463	.404	.359	.319	.282	.252	.184	.165	.149	.059	.054	.049	
5.0	.531	.457	.403	.456	.396	.350	.314	.276	.247	.182	.162	.147	.059	.053	.048	
6.0	.522	.449	.396	.449	.388	.344	.310	.272	.244	.180	.160	.145	.058	.052	.048	
7.0	.514	.441	.390	.442	.383	.340	.306	.268	.241	.178	.158	.143	.057	.052	.047	
8.0	.506	.435	.386	.436	.377	.337	.302	.265	.239	.175	.156	.142	.057	.051	.047	
9.0	.499	.430	.383	.430	.373	.334	.298	.262	.237	.174	.155	.142	.056	.051	.047	
10.0	.492	.425	.381	.424	.369	.332	.294	.260	.236	.172	.154	.141	.056	.050	.047	

C Range: 0 - 360DEG  
C Interval: 10.0DEG  
Test Speed: HIGH  
Temperature:25.3°C  
Operators:  
Test Date:03 January 2023

γ Range: 0 - 170DEG  
γ Interval: 2.5DEG  
Test System:EVERFINE GO-2000A\_V1 SYSTEM V2.00.456  
Humidity:65.0%  
Test Distance:6.340m [K=1.0000]  
Remarks:

## UGR(Unified Glare Rating) Table

NAME: 95MALIA24LED/WH					TYPE:					WEIGHT: 1				
SPEC.:					DIM.: 270 x 120 x 110					SERIAL No.: 0				
MFR.: Elmark Industries JSC					SUR.: 4 circler					Shielding Angle:				
ceiling/cavity	0.7	0.7	0.5	0.5	0.3	0.7	0.7	0.5	0.5	0.3				
walls	0.5	0.3	0.5	0.3	0.3	0.5	0.3	0.5	0.3	0.3				
working plane	0.2	0.2	0.2	0.2	0.2	0.2	0.2	0.2	0.2	0.2				
Room dimensions		Viewed crosswise					Viewed endwise							
x = 2H y = 2H	17.8	19.1	18.6	19.9	20.8	16.6	17.8	17.3	18.6	19.5				
3H	20.9	22.1	21.7	22.9	23.9	20.2	21.4	21.0	22.2	23.2				
4H	22.6	23.7	23.4	24.5	25.5	22.3	23.4	23.1	24.2	25.2				
6H	24.4	25.4	25.2	26.2	27.3	24.6	25.6	25.4	26.4	27.5				
8H	25.4	26.4	26.2	27.2	28.3	25.8	26.8	26.7	27.7	28.7				
12H	26.5	27.5	27.4	28.3	29.4	27.3	28.2	28.1	29.0	30.1				
4H 2H	18.7	19.7	19.5	20.6	21.6	17.8	18.9	18.6	19.7	20.7				
3H	22.0	23.0	22.8	23.8	24.9	21.4	22.3	22.2	23.2	24.2				
4H	23.9	24.7	24.7	25.6	26.7	23.5	24.4	24.4	25.2	26.3				
6H	25.9	26.6	26.7	27.5	28.6	25.9	26.7	26.8	27.6	28.7				
8H	26.9	27.7	27.8	28.6	29.7	27.3	28.0	28.1	28.9	30.0				
12H	28.2	28.8	29.1	29.7	30.9	28.8	29.5	29.7	30.4	31.5				
8H 4H	24.6	25.3	25.4	26.2	27.3	24.2	25.0	25.1	25.9	27.0				
6H	26.9	27.5	27.8	28.4	29.6	26.8	27.4	27.7	28.4	29.5				
8H	28.2	28.8	29.1	29.7	30.9	28.3	28.9	29.3	29.8	31.0				
12H	29.7	30.1	30.6	31.1	32.3	30.1	30.6	31.0	31.5	32.7				
12H 4H	24.7	25.4	25.6	26.3	27.4	24.5	25.2	25.4	26.1	27.2				
6H	27.2	27.8	28.1	28.7	29.9	27.2	27.7	28.1	28.6	29.8				
8H	28.7	29.1	29.6	30.1	31.3	28.7	29.2	29.7	30.2	31.4				
Variations with the observer position at spacings(CIE Pub.117):														
S = 1.0H	+ 0.1 / - 0.1					+ 0.1 / - 0.1								
1.5H	+ 0.2 / - 0.2					+ 0.2 / - 0.3								
2.0H	+ 0.3 / - 0.3					+ 0.3 / - 0.4								

CIE Pub.117, 1320 lm Total Lamp Luminous Flux Correct (8log(F/F0) = 1.0)  
Area: 0.0226865 m2

C Range: 0 - 360DEG  
C Interval: 10.0DEG  
Test Speed: HIGH  
Temperature:25.3°C  
Operators:  
Test Date:03 January 2023

γ Range: 0 - 170DEG  
γ Interval: 2.5DEG  
Test System:EVERFINE GO-2000A\_V1 SYSTEM V2.00.456  
Humidity:65.0%  
Test Distance:6.340m [K=1.0000]  
Remarks:

### UTILIZATION FACTORS TABLE

NAME: 95MALIA24LED/WH	TYPE:	WEIGHT: 1
SPEC.:	DIM.: 270 x 120 x 110	SERIAL No.: 0
MFR.: Elmark Industries JSC	SUR.: 4 circler	Shielding Angle:

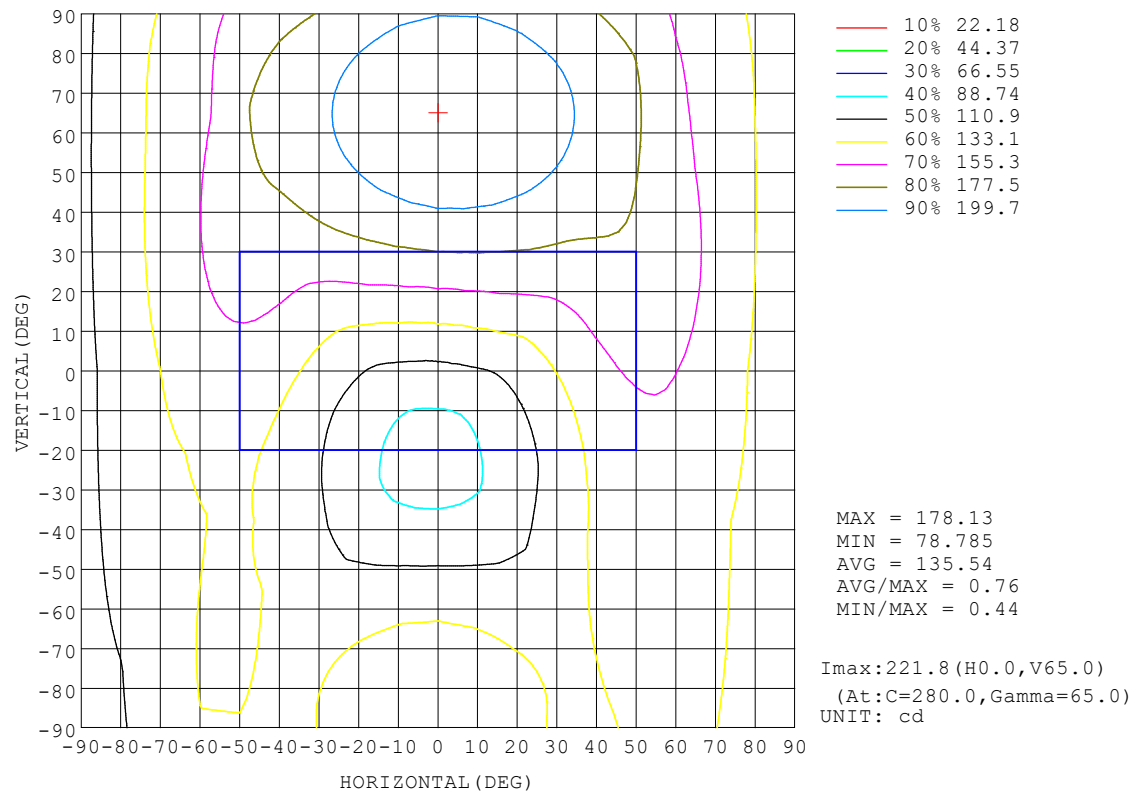
REFLECTANCE										
Ceiling	0.8	0.8	0.8	0.7	0.7	0.7	0.5	0.5	0.5	0
Walls	0.7	0.5	0.3	0.7	0.5	0.3	0.7	0.5	0.3	0
Working plane	0.2	0.2	0.2	0.2	0.2	0.2	0.2	0.2	0.2	0
ROOM INDEX	UTILIZATION FACTORS (PERCENT) $k(RI) \times RCR = 5$									
$k = 0.60$	43	28	19	41	27	19	38	26	18	10
0.80	53	37	27	50	35	26	46	33	24	14
1.00	62	45	34	58	43	33	52	42	30	18
1.25	70	53	41	66	50	40	58	46	37	23
1.50	76	59	48	71	56	46	63	51	42	26
2.00	85	69	58	80	66	55	70	59	50	32
2.50	91	76	65	85	72	62	74	64	56	36
3.00	95	82	72	89	78	68	78	69	61	39
4.00	102	90	81	95	85	76	83	75	68	44
5.00	106	96	87	99	90	82	86	79	73	48
ROOM INDEX	UF(total)									Direct
According to DIN EN 13032-2 2004			Suspended					SHRNOM = 1.25		

C Range: 0 - 360DEG  
C Interval: 10.0DEG  
Test Speed: HIGH  
Temperature: 25.3°C  
Operators:  
Test Date: 03 January 2023

γ Range: 0 - 170DEG  
γ Interval: 2.5DEG  
Test System: EVERFINE GO-2000A\_V1 SYSTEM V2.00.456  
Humidity: 65.0%  
Test Distance: 6.340m [K=1.0000]  
Remarks:

ISOCANDELA DIAGRAM

NAME: 95MALIA24LED/WH	TYPE:	WEIGHT: 1
SPEC.:	DIM.: 270 x 120 x 110	SERIAL No.: 0
MFR.: Elmark Industries JSC	SUR.: 4 circler	Shielding Angle:



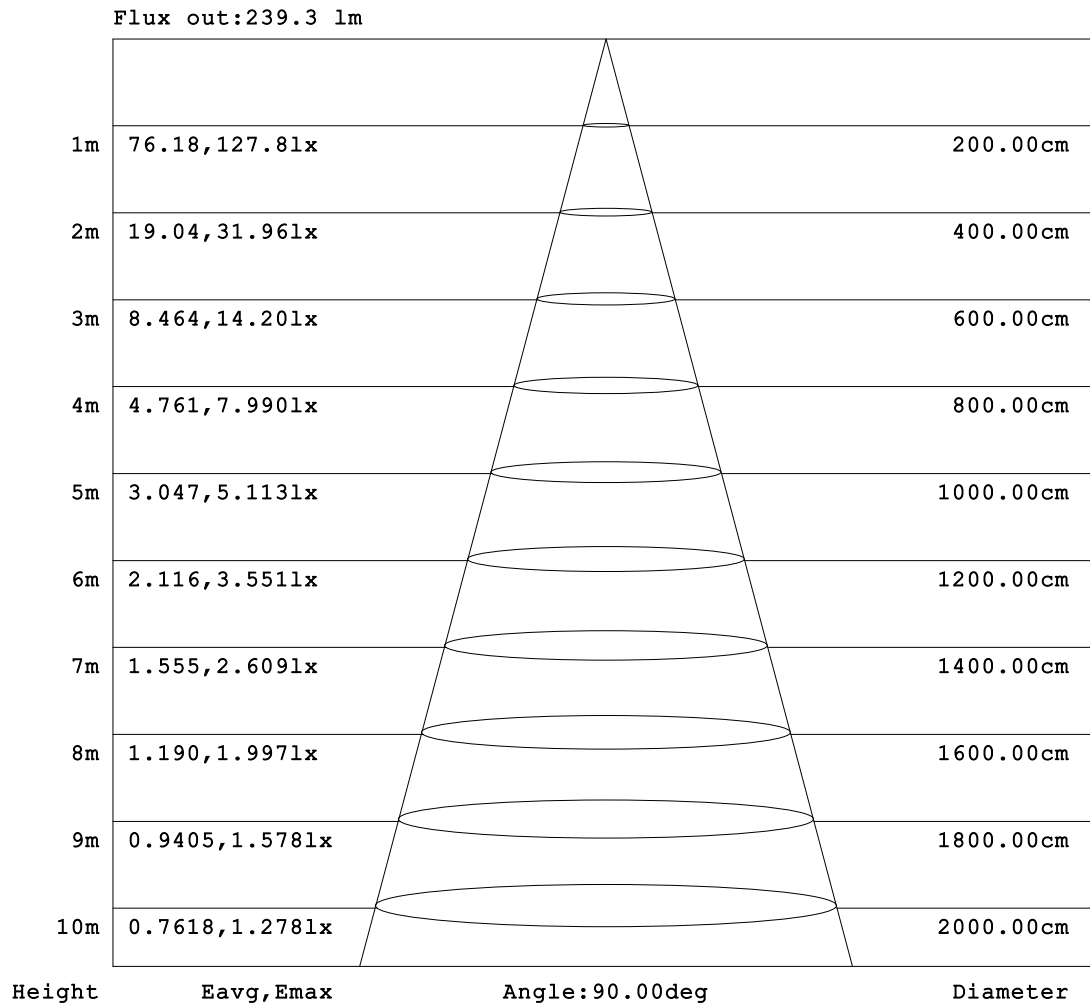
C Range: 0 - 360DEG  
C Interval: 10.0DEG  
Test Speed: HIGH  
Temperature:25.3°C  
Operators:  
Test Date:03 January 2023

γ Range: 0 - 170DEG  
γ Interval: 2.5DEG  
Test System:EVERFINE GO-2000A\_V1 SYSTEM V2.00.456  
Humidity:65.0%  
Test Distance:6.340m [K=1.0000]  
Remarks:



**AAI Figure**

NAME: 95MALIA24LED/WH	TYPE:	WEIGHT: 1
SPEC.:	DIM.: 270 x 120 x 110	SERIAL No.: 0
MFR.: Elmark Industries JSC	SUR.: 4 circler	Shielding Angle:



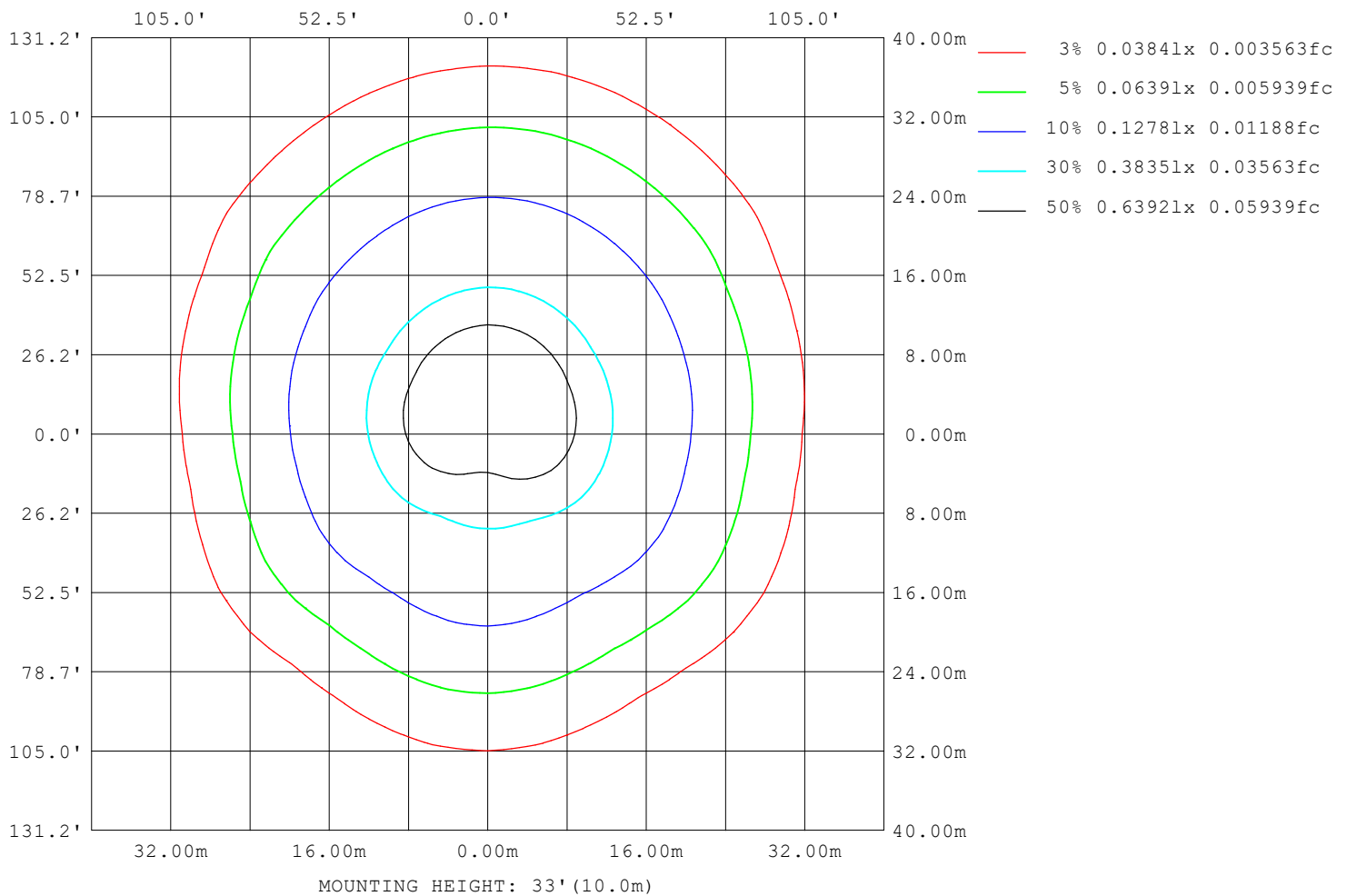
**Note:**The Curves indicate the illuminated area and the average illumination when the luminaire is at different distance.

C Range: 0 - 360DEG  
 C Interval: 10.0DEG  
 Test Speed: HIGH  
 Temperature:25.3°C  
 Operators:  
 Test Date:03 January 2023

γ Range: 0 - 170DEG  
 γ Interval: 2.5DEG  
 Test System:EVERFINE GO-2000A\_V1 SYSTEM V2.00.456  
 Humidity:65.0%  
 Test Distance:6.340m [K=1.0000]  
 Remarks:

ISOLUX DIAGRAM

NAME: 95MALIA24LED/WH	TYPE:	WEIGHT: 1
SPEC.:	DIM.: 270 x 120 x 110	SERIAL No.: 0
MFR.: Elmark Industries JSC	SUR.: 4 circler	Shielding Angle:



C Range: 0 - 360DEG  
C Interval: 10.0DEG  
Test Speed: HIGH  
Temperature: 25.3°C  
Operators:  
Test Date: 03 January 2023

γ Range: 0 - 170DEG  
γ Interval: 2.5DEG  
Test System: EVERFINE GO-2000A\_V1 SYSTEM V2.00.456  
Humidity: 65.0%  
Test Distance: 6.340m [K=1.0000]  
Remarks:

### LED Avg.L Report

NAME: 95MALIA24LED/WH	TYPE:	WEIGHT: 1
SPEC.:	DIM.: 270 x 120 x 110	SERIAL No.: 0
MFR.: Elmark Industries JSC	SUR.: 4 circler	Shielding Angle:

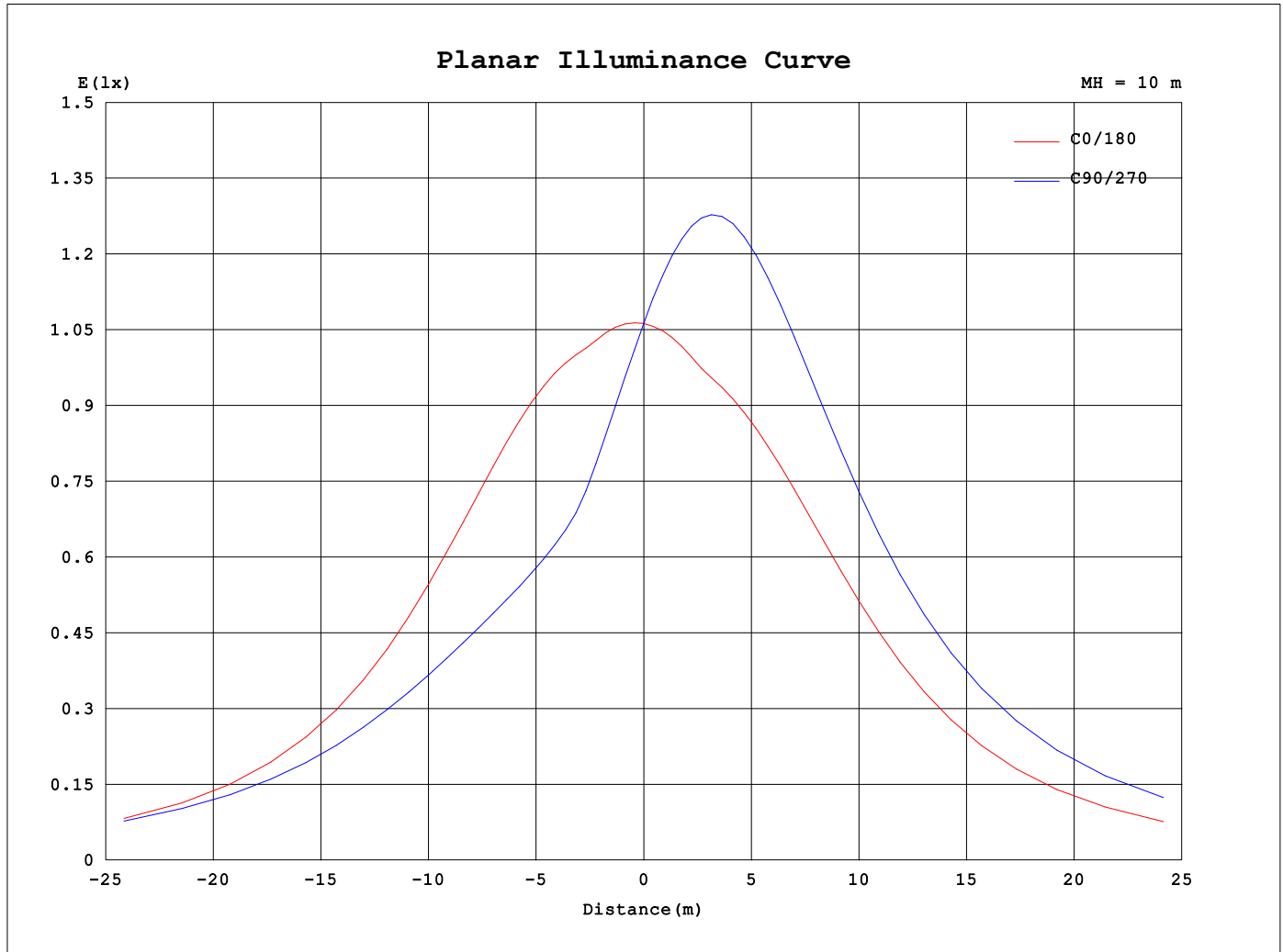
AvgL	cd/m2
L_0~180 (65) av	15132
L_0~180 (75) av	22442
L_0~180 (85) av	59348
L_90~270 (65) av	18614
L_90~270 (75) av	30972
L_90~270 (85) av	90462
L_45 (65) av	16724
L_45 (75) av	27282
L_45 (85) av	78279

Standard: GB/T 29293-2012

C Range: 0 - 360DEG  
C Interval: 10.0DEG  
Test Speed: HIGH  
Temperature:25.3°C  
Operators:  
Test Date:03 January 2023

γ Range: 0 - 170DEG  
γ Interval: 2.5DEG  
Test System:EVERFINE GO-2000A\_V1 SYSTEM V2.00.456  
Humidity:65.0%  
Test Distance:6.340m [K=1.0000]  
Remarks:

## Planar Illuminance Curve



C Range: 0 - 360DEG  
C Interval: 10.0DEG  
Test Speed: HIGH  
Temperature: 25.3°C  
Operators:  
Test Date: 03 January 2023

$\gamma$  Range: 0 - 170DEG  
 $\gamma$  Interval: 2.5DEG  
Test System: EVERFINE GO-2000A\_V1 SYSTEM V2.00.456  
Humidity: 65.0%  
Test Distance: 6.340m [K=1.0000]  
Remarks:

## LUMINOUS DISTRIBUTION INTENSITY DATA

NAME: 95MALIA24LED/WH	TYPE:	WEIGHT: 1
SPEC.:	DIM.: 270 x 120 x 110	SERIAL No.: 0
MFR.: Elmark Industries JSC	SUR.: 4 circler	Shielding Angle:

Table--1

UNIT: cd

C (DEG) γ (DEG)	0	10	20	30	40	50	60	70	80	90	100	110	120	130	140	150	160	170	180
0	106	106	106	106	106	106	106	106	106	106	106	106	106	106	106	106	106	106	106
5	107	105	104	102	101	99.2	98.1	97.3	96.7	96.5	96.4	96.8	97.4	98.4	99.5	101	102	104	106
10	109	106	102	99.0	96.0	93.5	92.1	89.6	88.9	88.0	88.4	88.7	90.1	91.7	93.8	96.6	99.6	103	106
15	112	108	104	99.9	95.9	92.0	88.9	85.3	83.1	81.0	81.5	83.0	85.9	88.5	91.9	95.6	99.5	104	108
20	119	114	109	103	98.3	93.3	88.9	84.2	80.8	78.7	79.1	81.0	85.1	88.7	93.2	97.8	103	108	113
25	126	120	114	108	102	96.0	90.7	84.8	81.5	79.9	80.3	81.3	86.1	90.7	96.1	102	107	113	119
30	134	128	121	114	107	99.9	93.7	87.0	84.9	83.4	83.7	84.2	88.6	94.0	100	107	113	120	126
35	142	135	128	121	113	105	97.8	91.5	90.1	88.8	89.0	89.1	92.3	98.3	105	112	120	126	133
40	149	142	135	127	119	110	103	97.4	96.7	95.6	95.8	95.3	97.3	104	111	119	126	133	140
45	154	148	141	134	125	116	107	104	104	104	104	102	103	109	117	124	130	137	145
50	157	151	145	138	131	121	112	110	112	112	112	110	109	114	123	129	134	140	148
55	158	152	147	142	135	125	117	117	120	121	120	117	115	118	127	132	135	140	147
60	155	150	147	144	139	128	121	123	127	128	128	123	120	122	130	134	135	137	144
65	151	146	146	146	141	130	125	128	133	135	135	129	124	124	133	135	133	133	139
70	145	141	144	147	142	131	128	132	139	141	140	134	128	126	135	136	131	128	133
75	138	136	142	146	143	132	130	136	144	146	145	138	131	127	135	136	129	122	126
80	130	130	139	145	142	131	131	138	147	149	148	141	133	127	135	135	127	117	119
85	123	125	137	143	141	129	132	140	149	151	150	143	134	127	134	134	124	112	112
90	115	121	134	141	139	127	131	140	149	152	151	143	134	125	132	132	122	108	106
95	115	121	134	141	139	128	133	143	152	155	154	146	136	127	133	132	123	110	106
100	114	121	134	141	138	128	135	145	154	156	155	148	138	128	133	133	124	111	105
105	111	120	132	138	135	128	135	145	154	157	156	149	139	128	131	131	122	110	103
110	107	116	127	134	131	127	135	145	154	156	155	148	138	127	127	127	119	107	98.8
115	99.6	110	121	127	125	124	133	143	151	154	153	145	136	124	121	122	113	102	92.6
120	90.4	102	113	119	118	120	130	139	147	149	148	141	132	120	115	114	106	94.9	84.5
125	79.0	90.6	102	110	110	115	125	134	141	143	142	136	126	115	107	106	97.8	85.8	74.3
130	63.1	73.4	85.6	99.1	101	108	118	127	134	136	135	128	120	108	99.0	95.9	87.1	72.0	59.9
135	42.8	50.3	63.9	84.1	91.9	101	111	119	125	127	126	120	112	101	90.8	85.5	71.2	53.9	41.7
140	23.5	29.9	42.8	67.4	82.7	92.4	102	109	115	117	115	110	102	92.2	82.4	74.3	51.7	33.9	24.6
145	14.1	17.6	32.7	58.9	73.3	82.2	92.2	98.9	104	105	104	99.1	92.3	83.0	73.6	61.5	35.1	18.5	16.3
150	10.6	11.5	25.2	46.2	62.8	69.0	80.0	87.4	91.7	92.7	91.6	87.4	81.6	73.4	63.4	44.5	23.6	11.3	11.6
155	9.40	8.15	15.3	28.2	42.5	56.6	67.4	74.8	79.0	79.7	78.9	75.4	70.0	61.2	43.5	28.0	15.2	8.64	8.19
160	4.69	4.78	6.36	13.3	22.2	34.1	48.4	59.7	66.0	66.5	65.8	60.0	50.0	37.3	24.0	14.8	9.41	6.70	5.32
165	4.00	3.50	2.33	4.11	8.74	15.2	23.4	30.8	35.6	36.9	35.4	31.1	24.7	17.3	10.0	5.13	4.41	5.87	5.55
170	3.55	4.50	3.72	2.57	1.80	3.51	7.53	10.1	12.0	12.3	11.6	9.78	7.35	3.27	2.01	2.72	3.86	3.47	4.27
175	0.00	0.00	0.00	0.00	0.00	0.00	0.00	0.00	0.00	0.00	0.00	0.00	0.00	0.00	0.00	0.00	0.00	0.00	0.00
180	0.00	0.00	0.00	0.00	0.00	0.00	0.00	0.00	0.00	0.00	0.00	0.00	0.00	0.00	0.00	0.00	0.00	0.00	0.00

C Range: 0 - 360DEG

C Interval: 10.0DEG

Test Speed: HIGH

Temperature:25.3°C

Operators:

Test Date:03 January 2023

γ Range: 0 - 170DEG

γ Interval: 2.5DEG

Test System:EVERFINE GO-2000A\_V1 SYSTEM V2.00.456

Humidity:65.0%

Test Distance:6.340m [K=1.0000]

Remarks:

## LUMINOUS DISTRIBUTION INTENSITY DATA

NAME: 95MALIA24LED/WH	TYPE:	WEIGHT: 1
SPEC.:	DIM.: 270 x 120 x 110	SERIAL No.: 0
MFR.: Elmark Industries JSC	SUR.: 4 circler	Shielding Angle:

Table--2

UNIT: cd

C (DEG) γ (DEG)	190	200	210	220	230	240	250	260	270	280	290	300	310	320	330	340	350		
0	106	106	106	106	106	106	106	106	106	106	106	106	106	106	106	106	106		
5	108	109	111	113	114	115	116	117	117	117	117	116	115	114	112	111	109		
10	110	113	117	120	123	125	127	128	129	129	128	126	125	122	119	116	113		
15	113	118	123	128	132	136	138	140	141	141	140	138	135	131	127	122	117		
20	118	123	130	136	142	146	150	152	153	153	152	149	145	141	135	129	123		
25	125	130	137	144	151	157	161	165	166	166	164	160	155	150	142	136	131		
30	132	137	143	152	160	167	172	176	177	178	174	171	165	158	150	144	139		
35	140	145	150	159	168	175	181	187	188	188	185	180	173	166	157	152	147		
40	147	152	157	165	174	183	190	196	198	198	194	189	180	172	164	159	154		
45	152	158	163	170	179	189	197	204	206	206	201	196	187	178	169	166	160		
50	155	162	168	173	184	194	202	210	213	213	207	201	191	182	174	170	163		
55	155	163	170	176	186	198	206	215	217	218	212	205	195	185	177	171	164		
60	153	161	170	179	188	200	209	218	220	221	215	207	196	187	177	170	162		
65	148	157	167	181	189	200	209	218	221	222	215	208	197	188	174	166	158		
70	143	152	162	180	188	199	208	217	221	221	215	207	196	187	170	161	153		
75	136	145	156	178	186	196	205	215	218	218	212	204	194	185	165	155	146		
80	130	141	152	174	182	192	200	210	213	213	207	200	190	181	160	150	139		
85	126	138	149	168	177	186	194	203	206	207	201	194	185	175	156	147	134		
90	122	134	145	162	170	179	187	195	199	199	193	186	178	168	152	142	130		
95	118	131	143	159	165	174	181	189	192	193	187	181	172	164	150	139	126		
100	114	125	135	151	157	165	171	179	182	182	177	171	163	157	141	133	121		
105	106	117	125	138	144	152	157	164	166	166	161	157	149	143	130	123	113		
110	97.2	105	112	122	128	135	139	144	146	146	142	138	132	126	116	111	103		
115	87.3	92.5	97.5	104	109	115	118	122	123	123	120	117	112	107	101	97.2	92.0		
120	75.9	78.1	82.0	86.5	89.3	93.5	95.2	98.4	98.2	98.7	95.9	94.7	90.6	88.7	84.8	81.8	78.7		
125	62.5	62.4	65.2	68.5	69.9	72.0	72.9	74.6	74.3	74.4	72.7	72.2	70.5	69.5	66.8	64.9	63.4		
130	48.4	46.0	47.9	49.7	50.4	51.6	51.8	53.1	52.8	52.7	51.1	50.8	49.9	49.7	48.3	47.4	47.3		
135	33.0	30.4	30.2	30.8	30.9	31.7	32.4	34.1	34.3	33.8	31.6	30.3	29.4	29.8	29.6	30.5	31.2		
140	20.1	17.8	14.6	12.8	12.6	14.3	16.6	18.8	19.4	18.8	16.3	13.6	10.8	11.0	13.0	17.0	18.9		
145	12.3	10.1	6.67	2.64	2.06	4.39	6.56	8.35	8.82	8.38	6.64	4.50	2.20	1.58	4.51	8.99	11.8		
150	8.70	6.89	4.86	3.22	1.95	1.41	1.91	2.55	2.78	2.60	1.98	1.42	1.58	2.65	3.97	5.65	6.54		
155	6.28	5.87	4.64	3.67	2.59	1.78	1.18	1.17	1.17	1.17	1.16	1.25	1.79	2.70	3.70	4.98	6.56		
160	7.25	5.96	4.36	3.74	2.69	1.64	1.18	1.17	1.16	1.18	1.16	1.21	1.62	2.52	3.10	5.24	8.07		
165	5.89	2.77	1.67	1.73	1.55	1.24	1.20	1.23	1.18	1.22	1.19	1.24	1.26	1.30	1.33	1.60	3.98		
170	2.52	1.43	1.30	1.28	1.25	1.26	1.23	1.24	1.23	1.24	1.24	1.26	1.26	1.29	1.31	1.33	1.39		
175	0.00	0.00	0.00	0.00	0.00	0.00	0.00	0.00	0.00	0.00	0.00	0.00	0.00	0.00	0.00	0.00	0.00		
180	0.00	0.00	0.00	0.00	0.00	0.00	0.00	0.00	0.00	0.00	0.00	0.00	0.00	0.00	0.00	0.00	0.00		

C Range: 0 - 360DEG

C Interval: 10.0DEG

Test Speed: HIGH

Temperature:25.3°C

Operators:

Test Date:03 January 2023

γ Range: 0 - 170DEG

γ Interval: 2.5DEG

Test System:EVERFINE GO-2000A\_V1 SYSTEM V2.00.456

Humidity:65.0%

Test Distance:6.340m [K=1.0000]

Remarks: